



CAMP

Campaign Against Marijuana Planting

Final Report

1995

TABLE OF CONTENTS

TOPIC	PAGE
Coordinating Group	1
Command Staff	1
Field Command Staff	2
Agency Coordinators	2
CAMP Mission	4
Executive Summary	5
Summary and Program Plan	8
Specialized Pre-Service Training	10
CAMP 1995 Pre-Service Training Program	10
Historical Marijuana Cultivation Statistics	11
Violence Associated with Marijuana	12
Media Relations/Public Awareness	12
Participating Agencies	12
Region I Accomplishments	15
Region II Accomplishments	16
Region III Accomplishments	17
Summary of Survey Responses	19
Member Counties	18
CAMP Critique and Planning Seminar	21

ATTACHMENTS

Organizational Chart	Attachment A
CAMP Statistics	Attachment B
CAMP Cumulative Raid Report	Attachment C
CAMP Program Time-Line	Attachment D-1
CAMP Program Time-Line continued	Attachment D-2
CAMP Survey	Attachment E-1
CAMP Survey	Attachment E-2



COORDINATING GROUP

- Roger Bruckner, Special Agent in Charge, Bureau of Land Management
- Charles Byrd, Sheriff, Siskiyou County Sheriff's Department
- William Carlson, Assistant Commissioner, California Highway Patrol (CHP)
- George J. Doane, Chief, Bureau of Narcotic Enforcement, Department of Justice
- Terry R. Farmer, District Attorney, Humboldt County District Attorney's Office
- Mark Ihde, Sheriff, Sonoma County Sheriff's Department
- Tamilyn Kyle, Regional Special Agent, Fiscal & Public Safety, United States Forest Service
- William J. Mitchell, Special Agent in Charge, Drug Enforcement Administration
- James Thomas, Sheriff, Santa Barbara County Sheriff's Department

COMMAND STAFF

- Dale A. Ferranto, Special Agent in Charge, Bureau of Narcotic Enforcement (BNE)
- Walt Kaiser, Operations Commander, BNE
- Robert Hill, Air Operations Chief
- Michael McPeters, CAMP Reconnaissance and Arrest Team Coordinator, BNE
- Candice Yoakam, Finance/Personnel Chief, BNE
- Carol Colla, Secretary, BNE
- Jack Nelsen, Clerical Support, Temporary Hire



FIELD COMMAND STAFF

REGION 1

(HUMBOLDT, SHASTA, TRINITY COUNTIES)

- Craig Buehler, Regional Operations Commander, BNE
- James McCoy, Assistant Regional Operations Commander/Team Leader, CHP
- Mark Saiz, CAMP Reconnaissance and Arrest Team Leader, CHP

REGION II

(MENDOCINO, LAKE, SONOMA, BUTTE COUNTIES)

- Bruce Ramey, Regional Operations Commander, CHP
- Berk Berkley, Assistant Regional Operations Commander/Team Leader, Temporary Hire, Retired Sheriff of Madera County
- David Mickelson, CAMP Reconnaissance and Arrest Team Leader, CHP

REGION III

(SANTA CRUZ, MONTEREY, SAN LUIS OBISPO, SANTA BARBARA COUNTIES)

- Daniel Bouchet, Regional Operations Commander, BNE
- Chuck George, Assistant Regional Operations Commander/Team Leader, CHP
- D. Scott Russell, CAMP Reconnaissance and Arrest Team Leader, CHP



AGENCY COORDINATORS

- Tyler Pon, Legal Counsel, Office of the Attorney General
- Michael VanWinkle, Public Information Officer, Division of Law Enforcement
- Marty Myers, Special Agent, United States Forest Service
- Mike Swanson, Traffic Officer, CHP
- Ray Peterson, Pilot, Civil Air Patrol
- Paul Seehafer, Special Agent, Drug Enforcement Administration
- Kevin Holeman, Captain, Liaison Officer, California National Guard



Sinsemilla Marijuana
(*Sinsemilla* means "without seeds")



CAMP MISSION

Marijuana cultivation in the United States is a multi-billion dollar industry, with domestic growing increasing dramatically. California is no exception. Illegal cannabis cultivation is occurring in nearly every county in the state. The California marijuana eradication effort began in 1977 when it became apparent that marijuana cultivation was increasing at an alarming rate. In 1979, the California Department of Justice, Bureau of Narcotic Enforcement (BNE), obtained a federal grant to assist the sheriffs in four Northern California counties with their eradication efforts. As a result of their efforts, nearly 30,000 plants were seized during the 1979 "harvest season."

In 1980, the program was expanded to include 43 California counties. BNE conducted 2 two-week observer schools to train local police officers in the specialized field of marijuana eradication. Specialized vehicles and equipment were purchased by BNE and the Drug Enforcement Administration (DEA). This more concerted effort resulted in the seizure of 156,000 plants and the arrest of 1,000 suspects.

In 1981, the eradication program was again expanded to include helicopter support from the U.S. Customs Service. This allowed a safe and cost-effective means of accessing large crops in inaccessible areas of California's Central Coast. In 1982, BNE assigned 10 special agents and 2 fixed wing aircraft to support the efforts of local sheriffs. In addition, the U.S. Forest Service (USFS) and the Bureau of Land Management (BLM) supplied additional funding and a new perspective on marijuana cultivation, that of the damage to the environment from fertilizers and pesticides used in the illicit growing. In excess of 90,000 plants were seized in 1982.

In March of 1983, BNE, at the direction of the Attorney General, invited principal state and federal agencies to meet and plan a unified program. The original involved agencies -- BNE, DEA, USFS, and BLM -- were joined by U.S. Customs Service, California National Guard (CNG), California Highway Patrol (CHP), and the Office of Emergency Services (OES). To provide the vehicle for the focusing of multi-level, multi-agency resources on the problem, a jointly operated local, state and federal organization was conceived and titled the "Campaign Against Marijuana Planting", referred to by the acronym "CAMP." Since 1983, CAMP has provided the people of the State of California and the law enforcement community with an annual summary of CAMP activities.

In addition to promoting information and education programs regarding marijuana, CAMP's primary thrust is to provide resources not otherwise available to California law enforcement so they can more effectively combat the marijuana cultivation problem in their jurisdictions. In conjunction with the assistance provided to local agencies in investigation, eradication, surveillance and arrest efforts, CAMP gathers data on marijuana cultivation and associated information that provides a problem monitoring foundation to effectively devise solutions to this illegal activity. CAMP's long-term goals include the reduction of marijuana cultivation, both outdoors and indoors, to assist local law enforcement with the arrest, prosecution, and forfeiture of assets of cannabis cultivators; and to maintain a data base of intelligence information to provide to local, state and federal law enforcement.



EXECUTIVE SUMMARY

General

On September 29, 1995, the thirteenth consecutive Campaign Against Marijuana Planting (CAMP) eradication season concluded. CAMP 1995 enjoyed a safe, efficient, lawsuit-free, and successful season.

During the eight-week eradication season, CAMP 1995 achieved the following:

- **74,769 Plants Eradicated**
- **60 Arrests**
- **16 Seized Firearms**

Humboldt County of Region I led all counties in plant seizures with 26,835 marijuana plants eradicated.

The objectives for the 1995 CAMP mission were as follows:

- First** Provide services not otherwise available to local sheriffs and provide these services in a safe and efficient manner.
- Second** Eradicate as many marijuana plants as possible
- Third** Arrest as many marijuana cultivators as possible.
- Fourth** Ensure the public that CAMP continues its commitment to marijuana eradication.

Safe Sheriff Services

CAMP's primary objective, as previously stated, is to supply services to counties in a safe and efficient manner while working under the direction of the sheriff -- hence the term "Safe Sheriff Services."

The 1995 CAMP raid team supplied safe services to nine county sheriffs, the United States Forest Service (USFS), and the Bureau of Land Management (BLM). The three regions were assigned 11 primary counties of the 44 counties participating in CAMP. Each Regional Operations Commander (ROC) supervised five raid team members, a pilot, helitac manager, five California National Guard "Team Wolf" soldiers (soldiers specially trained to work with civilian law enforcement in an enforcement function), and four CAMP Reconnaissance and Arrest Team members (C-RATs), a specially trained contingent of California Highway Patrol officers. A number of sheriffs' deputies supplied observers, surveillance, and law enforcement expertise and functioned as "Lead Deputies."

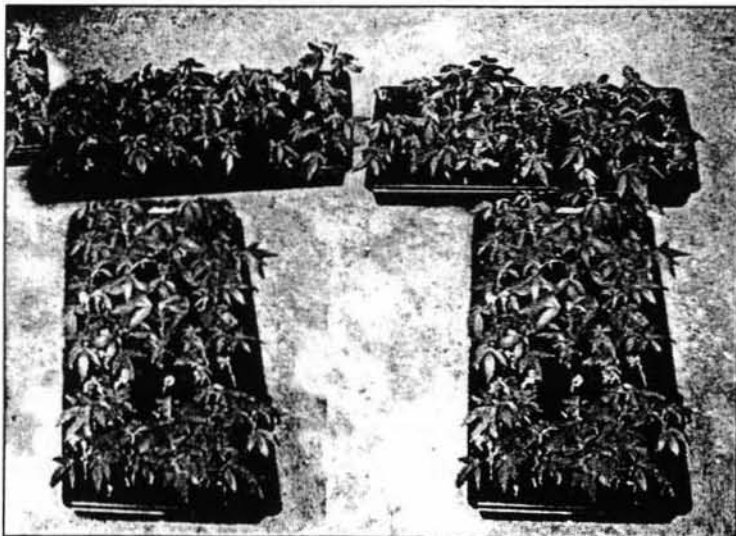


1995 to change the Schedule I status of marijuana, all of them have been defeated or vetoed. At this time, however, there have been new studies released proving that not only is marijuana a habituating drug, but it is also addictive. New research proves that marijuana smoking is a cause of tongue, mouth and throat cancer and can be three times more carcinogenic than tobacco.

The most recent surveys in our junior and senior high schools also show marijuana use is on the increase and the perception of harmfulness on the decrease.



400 pounds of marijuana destined for destruction



"Clone" marijuana plants. All are genetically identical to their mother plant.



SUMMARY AND PROGRAM PLAN

During the thirteenth consecutive CAMP eradication season, the task force again realized enormous success in the eradication of marijuana from the State of California. This success is entirely due to the dedicated efforts of committed CAMP participants at the federal, state, and local level. The CAMP experience has and will continue to foster a spirit of loyalty to the elimination of marijuana from all counties of the state. Despite the ups and downs of the budget years, the availability of agency participants, and the acquisition of resources and supplies to assist the CAMP effort, the individual work of those who comprise CAMP has once again sustained the momentum that will continue to keep CAMP as a model counternarcotics task force.

Planning for the 1996 season will reflect the need to accomplish similar successes of years past. Without reservation, the primary focus of preseason activities will be in the training of personnel to operate safely, efficiently and effectively. The skill demanded of CAMP personnel will include field survival, air operations and team administration. The quality of CAMP personnel is the glue that binds the overriding successes in all of these areas of training. Therefore, recruitment as an objective to reach this goal is crucial.

The 1996 CAMP operations concept will involve a three-region operations area. Each region will again be supported by a full eradication team complement, a helicopter and California National Guard troops. During the season, each team should also be fully supported by uninterrupted services of lead deputy sheriffs in the counties where eradication is taking place. These counties will be the high-producing marijuana regions of the state in which the majority of marijuana cultivation takes place during peak harvest months of August, September, and October. As always, CAMP will attempt to service any and all Memorandum of Understanding (MOU) signatory counties as teams are available. The Memorandum of Understanding (MOU) is sent to each of the 58 sheriffs in the State of California. The MOU simply states that if a sheriff desires the use of a CAMP team, the sheriff must supply a deputy to coordinate the county's portion of the operation, collect and preserve evidence, and arrange for destruction of seized marijuana per Health and Safety Code statute.

The Regional Operation Commanders (ROC) for the upcoming season will be recruited based upon prior CAMP experience. These ROCs will come fully prepared to immediately engage in the CAMP experience with very little remedial training. Additionally, these ROCs will plan advance visits to their regions of operation to conduct a preseason liaison with the lead deputy sheriffs and reconnaissance of the area. All in all, experienced ROCs who scope their regions early will be much more effective for CAMP when the season begins.

The CAMP Reconnaissance and Arrest Team (C-RAT) component will once again be fielded. A complete CAMP program requires the services of C-RATs in order to increase arrests and enhance the potential for successful prosecution of cultivators. The possibility of employing C-RAT teams earlier in the season and prior to the deployment of eradication teams is being studied in order to surprise growers before their plants are fully mature. Participation of the California Highway Patrol



as exclusive C-RAT members has shown to be very successful with the exceptional professional and disciplined characteristics of the CHP officers selected.

The CAMP 1996 deployment envisions allied agency participation as in prior years. The Drug Enforcement Administration, United States Forest Service, and the Bureau of Land Management will be recruited to be the lead federal agencies in the program effort. The military contributions to the CAMP effort will, hopefully, again include the members of "Team Wolf" of the California National Guard, California Air National Guard services, United States Air Force Civil Air Patrol flights, and Joint Task Force-6 training personnel. The Sacramento-based Motor Transport Company of the United States Marine Corps will also be encouraged to support all vehicle maintenance and storage needs of CAMP. The marriage of the military services and civilian counternarcotics personnel has matured over the last five years into an exceptionally valuable mission-oriented effort of both groups. The CAMP program has, beyond a doubt, been a cornerstone in the maturing process of utilizing military resources for civilian counternarcotics law enforcement.



Drying Sinsemilla "Buds"



SPECIALIZED PRE-SERVICE TRAINING

Preparation for the eradication phase of the CAMP program each year begins well before field operations with extensive planning and training. Everyone who participates in CAMP, depending on the nature of the job they are required to perform, is required to attend at least one of the five specialized training courses.

During the months of June and July, CAMP presented a series of training courses throughout the state that addressed all facets of the program, from raid team tactics to field leadership training and program management.

CAMP 1995 PRE-SERVICE TRAINING PROGRAM

CAMP Safety Course

Due to budget constraints and the elimination of raid team volunteers, the safety course was not presented this year. All required safety issues were addressed during the CAMP Officer Survival School training course and the CAMP Command Staff administrative training.

CAMP Officer Survival Training Course

Designed for CAMP field command staff, lead deputies and volunteer team leaders, this five-day, 56-hour intensive format course trained students on land navigation and survival techniques unique to CAMP operations. The course was presented in July 1995 by the San Bernardino County Sheriff's Department Training Academy staff and CAMP command staff. It was attended by regional operations commanders, team leaders, CAMP temporary hires, C-RAT team leaders, volunteers from the Nevada Bureau of Investigation and the Santa Monica Police Department.

United States Forest Service (USFS) Aerial Observation School

This 40-hour course designed for sheriffs' departments lead deputies and other key personnel with marijuana investigation responsibilities was presented in Sonoma County in July 1995. The course instructs students on all facets of marijuana investigations, including aerial observation, helicopter safety, search warrant preparation, legal aspects of cannabis eradication, and raid tactics.

CAMP Command Staff Administration Training

This 16-hour course instructed all CAMP command and operations staff on CAMP administrative procedures and legal updates.

CAMP Reconnaissance and Arrest Team (C-RAT) Course

Designed for CAMP Reconnaissance and Arrest Team (C-RAT) members, this course was extended in the 1995 season from 56 hours to 80 hours. The course format is focused on team building, survival and investigative skills for conducting surveillance and investigation in an outdoor



environment. The course was presented in June 1995 at the California Highway Patrol Academy by the CAMP command staff along with assistance from the United States Forest Service, Bureau of Land Management, Joint Task Force Six, Mendocino County Sheriff's Department, San Bernardino County Sheriff's Department, and the California State Fire Marshall's Office.

California National Guard Orientation

This year the California National Guard supplied personnel to support our three raid teams. These personnel were an integral part of the teams and assisted in landing zone operation, helicopter sling load lifts, and marijuana eradication. CAMP command staff personnel presented a 16-hour orientation to all team leaders of the California National Guard "Team Wolf" personnel participating on raid teams. "Team Wolf" troops are California National Guard troops specially trained to assist in the eradication of marijuana.

HISTORICAL MARIJUANA CULTIVATION STATISTICS

<i>Year</i>	<i>No. of Plants Eradicated Statewide</i>	<i>No. of Plants Eradicated by CAMP</i>	<i>% of Plants Eradicated by CAMP</i>
1983	303,089	64,579	21%
1984	256,976	158,493	62%
1985	309,001	166,219	54%
1986	223,529	117,277	52%
1987	289,833	144,661	50%
1988	330,297	107,297	32%
1989	328,824	147,518	49%
1990	174,876	79,441	45%
1991	151,479*	85,159	56%
1992	211,094**	92,388	43%
1993	224,801***	66,386	29%
1994	390,263****	82,694	21%
1995	370,182*****	74,769	20%

*Includes 45,562 indoor plants, 30% ** Includes 49,159 indoor plants, 23% ***Includes 65,363 indoor plants, 29%



****Includes 42,202 indoor plants, 11% *****Includes 51,405 indoor plants, 14%

VIOLENCE ASSOCIATED WITH MARIJUANA CULTIVATION

During the eight weeks of the 1995 CAMP season, sixteen (16) firearms were seized. No booby traps were encountered, and no raid team officers fired their weapons. However, a growing concern with CAMP is the illegal alien growers and the violence they bring with them. Prior to the start of the eight-week CAMP season, the Mendocino County Sheriff's Department was involved in a shooting incident related to a marijuana garden. A Mendocino County deputy had entered a large marijuana garden when he became the subject of an ambush. The deputy returned fire and flushed the subject from the garden where he encountered two more deputies. Over thirty (30) shots were exchanged before the illegal alien escaped.

While CAMP-specific actions have remained relatively violence free over the last five years, many growers are becoming increasingly armed and motivated to protect their illegal investments. CAMP training and operations will continue to place the highest emphasis on the safety of all raid team members.

MEDIA RELATIONS/PUBLIC AWARENESS

Several interesting media contacts occurred during the 1995 season. In Mendocino County, CAMP hosted German Television USA. They filmed a complete CAMP operation to be aired in Germany on "Weltspiegel," the German "60 Minutes." Humboldt County's CAMP team hosted "Real Stories of the Highway Patrol." The producers of the program were so pleased with the film footage that two episodes of CAMP raids aired in February 1996. On August 28, 1995, CAMP hosted KSBW Television from Salinas on a raid of the largest single marijuana garden of the season. Unfortunately, it was during this raid that CAMP sustained its second helicopter crash in its thirteen-year history. Fortunately, there were no injuries even though the helicopter was a total loss. The print media had numerous CAMP stories published in papers ranging from the *San Francisco Chronicle* to the "Police Magazine." Mendocino County hosted a media day in conjunction with the German film crew. CAMP received favorable reporting in several newspapers as a result of the event. At the end of the season, a press release was issued to all media in California. The press release promoted the success of the 1995 CAMP campaign and noted some new trends.

PARTICIPATING AGENCIES

Thirty-three local, state, and federal law enforcement agencies participated in the CAMP 1995 program by contributing personnel, funding, or equipment. More than 150 personnel participated in the CAMP 1995 program. CAMP teams were composed of the following: civilian helicopter pilots and fuel truck drivers, retired U.S. Forest Service helicopter managers and law enforcement officers,



sheriffs' deputies from participating counties, special agents from the California Department of Justice, traffic officers from the California Highway Patrol, reserve deputies from local California law enforcement agencies hired as temporary state employees, and full-time peace officer volunteers provided by local law enforcement agencies from throughout California. The volunteer officers' salaries, per diem, and lodging were paid by their respective agencies. Travel accommodations were provided by CAMP and the Civil Air Patrol. Several agencies funded their officers' expenses.

For the purpose of this report, the participating agencies are grouped into three categories: (1) state agencies, (2) federal agencies, and (3) CAMP member counties. The state and federal agencies provided CAMP's funding as well as the majority of the personnel resources and equipment. The CAMP county members are sheriffs' departments that are recipients of CAMP services ranging from reconnaissance overflights to raid team services. The San Bernardino County Sheriff's Department, for the eleventh year, provided expert training to CAMP's field command staff.

The California State Sheriffs' Association (CSSA) and the following agencies were involved in CAMP 1995:

State:

California Department of Justice, Bureau of Narcotic Enforcement
California Highway Patrol
California National Guard

Federal:

Bureau of Land Management
United States Drug Enforcement Administration
United States Forest Service
Civil Air Patrol
United States 6th Army Joint Task Force
United States Marine Corps

California National Guard members of "Team Wolf" provide assistance to lead deputies.





CAMP 1995 Participating Agencies





Region I *Accomplishments*



Number of personnel	17
Plants seized	26,835
Arrests	11
Suspects Identified	9
Guns Seized	1
Value of seizures	101 Mill

Region I CAMP personnel consist of 1 special agent (BNE), five CHP officers, one USFS special agent, five California National Guard soldiers, and five temporary hires.

SUBJECT ARRESTED WITH NURSERY

On September 5, 1995, CAMP personnel, assisting the Humboldt County Sheriff's Department, seized 2,880 starter plants ranging in size from 2 feet to 4 feet. CAMP personnel also seized \$13,000 in cash as well as a new ATV. One subject was arrested.

SEELY CREEK'S OWN HOMEGROWN

On September 10, 1995, CAMP personnel, along with Humboldt County deputies, again raided in the Seely Creek area of Humboldt County. On this day of raiding, 2,532 plants were removed from a steep ravine near the creek. No arrests were made. This brought the number of plants seized from the Seely Creek area to 5,412 in two days of raids. The value of the plants seized exceeded \$20.5 million.

MILL CREEK YIELDS GREEN GOLD

On September 12, 1995, Humboldt County deputies and CAMP personnel harvested 1,407 marijuana plants from the Mill Creek area. The value of the plants was \$5 million.

In all, Region I harvested eight sites with 1,000 or more plants per site during the eradication season.



Region II *Accomplishments*



Number of personnel	16
Plants seized	36,760
Arrests	28
Suspects Identified	7
Guns Seized	0
Value of seizures	129.6 Mil

Region II CAMP personnel consist of six temporary hires, five CHP officers, and five California National Guard soldiers.

NAPA VINEYARD YIELDS MORE THAN GRAPES

On September 12, 1995, CAMP personnel received a request for assistance from the Napa County Drug Task Force. They had discovered a marijuana grow on La Jota Vineyard in Angwin California. CAMP personnel assisted in the eradication and removal of 1,437 plants ranging in size from 10 feet to 14 feet tall. The plants had a value of \$5.4 million. The garden appeared to be the work of illegal Mexican nationals. This was determined from the evidence left at the garden. No arrests were made. The owners of La Jota Vineyards were only happy to see the plants eradicated.

In all, Region II harvested 9 sites with 1,000 or more plants per site during the eradication season.

TWO THOUSAND PLUS PLANTS SEIZED IN DEVIL'S SLIDE

On August 16, 1995, CAMP personnel and Mendocino County deputies located and eradicated 2,352 plants while working in the Devil's Slide area of the county. The plants ranged in height from 6 feet to 8 feet. The plants had a value of \$8.9 million.

DOCTOR ARRESTED FOR MARIJUANA CULTIVATION

On September 8, 1995, CAMP personnel assisted the Sonoma County Sheriff's Department in the execution of a search warrant on a residence in Sebastapol. Officers seized 176 marijuana plants ranging in size from 4 to 8 feet. The plants had a value of \$668,000. Deputies arrested an anesthesiologist from a large hospital as well as his wife.



Region III *Accomplishments*



Number of personnel	15
Plants seized	11,174
Arrests	21
Suspects Identified	2
Guns Seized	21
Value of seizures	42.6 Mill

Region III CAMP personnel consist of one special agent (BNE), five CHP officers, four temporary hires, and five California National Guard soldiers.

SANTA CRUZ MOUNTAINS YIELD GREEN HARVEST

On August 23, 1995, CAMP personnel assisted the Santa Cruz County Sheriff's Department in the seizure of 3,072 plants from the Skyline Road area of Santa Cruz County. These raids resulted in the arrest of four individuals for cultivation of marijuana. The plants ranged in size from 1 to 8 feet tall and had an estimated value of \$11,673,600.

CARMEL VALLEY'S OWN CASH CRIP

On August 28, 1995, CAMP personnel assisted the Monterey County Sheriff's Department in the eradication of 3,627 marijuana plants ranging in size from 8 to 12 feet. The plants had a value of \$13.8 million. The garden was tended by Mexican nationals, who were not arrested. From evidence at the garden, it appeared that four well-armed individuals were responsible for the grow. Police seized a fully loaded 30 caliber carbine. This was the largest garden seized by CAMP in the 1995 season.

Region III yielded two sites with more than 1,000 plants per site.



MEMBER COUNTIES

Forty-four (44) California sheriffs' departments participated in the CAMP 1995 program. They are as follows:

County

Alameda
Alpine
Butte
Calaveras
Colusa
Contra Costa
Del Norte
El Dorado
Fresno
Humboldt
Imperial
Kern
Kings
Lake
Lassen
Los Angeles
Madera
Marin
Mendocino
Merced
Modoc
Monterey
Napa
Placer
Plumas
Riverside
San Benito
San Luis Obispo
San Mateo
Santa Barbara
Santa Clara
Santa Cruz
Shasta
Sierra
Siskiyou
Sonoma
Stanislaus
Sutter
Tehama
Trinity
Tulare
Ventura
Yolo
Yuba

Sheriff

Charles C. Plummer
Henry "Skip" Veatch
Mick Grey
William S. Nuttall
Gerald E. Shadinger
Richard K. Rainey
Mike Ross
Don McDonald
Steve Magarian
Dennis H. Lewis
Oren R. Fox
Carl Sparks
Tom Clark
James E. Wright
Ronald D. Jarrell
Sherman Block
Glenn Seymour
Charles T. Prandi
James Tusso
Tom Sawyer
Bruce C. Mix
Norman Hicks
Gary L. Simpson
Donald J. Nunes
Don Stoy
Cois M. Byrd
Harvey Nyland
Edward C. Williams
Leonard E. Cardoza
James Thomas
Charles P. Gillingham
Mark Tracy
Jim Pope
Leland Adams
Charles Byrd
Mark Ihde
Les Weidman
Art Brandwood
Rudy Mike Blanus
Paul Schmidt
Melvin Coley
John V. Gillespie
Robert Martinez
Gary Tindel



SUMMARY OF SURVEY RESPONSES

At the end of each season, CAMP surveys the counties that received services to ascertain information to assist in planning for the coming season. This information is also used by the readers of the CAMP Annual Report to compare the eradication needs on a county-by-county basis.

Eradication Team Size

Surveys were sent to all MOU counties. Twelve agencies out of 44 completed the CAMP survey. Six of the agencies completing the survey did not use CAMP services; the remaining six agencies' responses ranged from "too large" to "adequate." All six counties rated team services as excellent.

Air/Helicopter Operations

The 1995 CAMP contract helicopter operations went by with only one mishap, the second in thirteen years. This year CAMP contract ships flew 464.7 hours.

On August 28, 1995, while operating in Carmel Valley, Monterey County, the Region III helicopter, a Jet Ranger under contract, had a tail rotor strike and crashed. Due to the knowledge, skill and courage of the pilot, Craig Mossman, no one was injured. The helicopter sustained major damage and was listed as a total loss.

The Civil Air Patrol (CAP) and the California National Guard supplied additional aviation operations to CAMP. The CAP flew both reconnaissance and personnel transport missions. Flights for CAMP-supported schools were also provided.

The California National Guard assisted CAMP by providing 625 hours of helicopter reconnaissance time and 197 hours of additional aircraft personnel transport time. The majority of agencies requested more helicopter time both from the National Guard and from CAMP. This was usually submitted in the form of requests for a longer CAMP season.

In 1995 Global Positioning Systems (GPS) were standard equipment on all helicopters. Each raid team was also equipped with a GPS unit. A tremendous amount of blade hours were saved in what used to necessitate a helicopter guiding teams into gardens.

Start-Up Dates

The vast majority of agencies responding (8 of 12 with 2 not listed) requested start-up dates in either August or September. The exception was Mendocino County, which requested a May start-up date. The agencies felt that reconnaissance should be done during June and July. A few agencies requested reconnaissance as early as March and May.



CAMP CRITIQUE AND PLANNING SEMINAR

For the third year, the CAMP Critique and Planning Seminar was held in South Lake Tahoe at the Embassy Suites. Over 150 registrants received training in Power Diversion, Infectious Diseases, Search and Seizure, Marijuana Identification and Cultivation Techniques, and Courtroom Survival. Attendees present were from throughout California.

During the General Session on the first day of the seminar, a presentation was made on the four marijuana initiatives sponsored by the National Organization for Reform of Marijuana Laws (NORML) for the November 1996 ballot. A lively discussion by seminar attendees resulted in several areas to be explored by CAMP staff to combat the initiatives, i.e., public service announcements comparing marijuana to tobacco, articles for newspapers debunking "medicinal marijuana," and establishing a pool of speakers to counter the legalization and medicinal marijuana arguments.

The keynote address at the awards banquet was delivered by former professional baseball player Steve Sax. A variety of awards were presented to civilian, military, and sworn CAMP participants as follows:

Meritorious Service Awards

Presented to individuals who have supported CAMP through training or service to the CAMP eradication effort:

John James "Stoney" Saathoff, Reserve Deputy, San Bernardino County Sheriff's Department
Kelly Bachelor Foreman, Reserve Deputy, San Bernardino County Sheriff's Department
Todd Garr, Traffic Officer, California Highway Patrol
Michael Swanson, CAMP Liaison Officer, California Highway Patrol
Sonoma County Marijuana Eradication Team

Department of Justice Engraved Plaques

Presented to individuals for outstanding service to CAMP in an individual eradication effort:

Barry Lucero, Special Agent, Drug Enforcement Administration
Craig Mossman, Pilot, Westwind Helicopters

Drug Enforcement Administration Awards

Presented by the Drug Enforcement Administration for outstanding service to the federal government in the marijuana eradication effort:

Jerry Price, Law Enforcement Officer, United States Forest Service
Steve Reed, Officer, San Diego Police Department
Rusty Noe, Deputy, Mendocino County Sheriff's Department



U.S. Forest Service Achievement

Awards Presented by the U.S. Forest Service for service rendered on Forest Service lands in the marijuana eradication effort:

Craig Pinkerton, Law Enforcement Officer, Sierra National Forest

Richard Coots, Law Enforcement Officer, Klamath National Forest

Don McLean, Law Enforcement Officer, Plumas National Forest

California National Guard Commendation Medal

Presented to California National Guard soldiers for service above and beyond the call of duty in the marijuana eradication effort in California:

Sergeant Michael McLain, California National Guard, Team Wolf

Sergeant Norris Cowles, California National Guard, Team Wolf

Sergeant Patrick Jimosse, California National Guard, Team Wolf

California National Guard Letter of Commendation

Presented to California National Guard "Team Wolf" members for service beyond the call of duty in the marijuana eradication effort in California:

Sergeant Patrick Jimosse, California National Guard, Team Wolf

Specialist Sapete Aiono, California National Guard, Team Wolf

Specialist Joseph Barker, California National Guard, Team Wolf

Corporal Dan Jensen, California National Guard, Team Wolf

Corporal James Acton, California National Guard, Team Wolf

Sergeant Norris Cowles, California National Guard, Team Wolf

Sergeant Ronnel Coaster, California National Guard, Team Wolf

Sergeant Richard Salvador, California National Guard, Team Wolf

Corporal Adam Healy, California National Guard, Team Wolf

Corporal Richard Ortiz, California National Guard, Team Wolf Sergeant

Sergeant Michael McLain, California National Guard, Team Wolf

Private First Class Mark Stahlman, California National Guard, Team Wolf

Sergeant Anthony Hinojosa, California National Guard, Team Wolf

Sergeant James Bellew, California National Guard, Team Wolf

Sergeant James Pratt, California National Guard, Team Wolf



California National Guard Counter Drug Branch Ribbon

Presented for outstanding cooperation and support of the California National Guard's effort in marijuana eradication:

Walter E. Kaiser, Special Agent Supervisor, Department of Justice, Bureau of Narcotic Enforcement, CAMP

Bruce Ramey, Traffic Officer, California Highway Patrol

California National Guard Meritorious Service Medal

Presented for outstanding cooperation and support of the California National Guard's effort in marijuana eradication at management level:

Dale A. Ferranto, Special Agent in Charge, Department of Justice, Bureau of Narcotic Enforcement, CAMP

Attorney General Certificates of Commendations

Nominations for the Attorney General's Certificate of Commendation must meet specific criteria. They are as follows:

1. The nominee (individual or unit) has made a significant contribution to California's marijuana eradication and enforcement effort; and/or
2. Through extraordinary means, the nominee has prevented injury or loss of life involved in CAMP operations.

Daniel Bouchet, Special Agent, Bureau of Narcotic Enforcement

Fernando Lara, Reserve Police Officer, Calexico Police Department

John Klauer, Reserve Deputy, San Benito County Sheriff's Department

Craig Buehler, Special Agent, Bureau of Narcotic Enforcement

James McCoy, Traffic Officer, California Highway Patrol

Scott Goucher, Reserve Deputy, Placer County Sheriff's Department

Michael McPeters, Special Agent, Bureau of Narcotic Enforcement

David Mickelson, Traffic Officer, California Highway Patrol

D. Scott Russell, Traffic Officer, California Highway Patrol

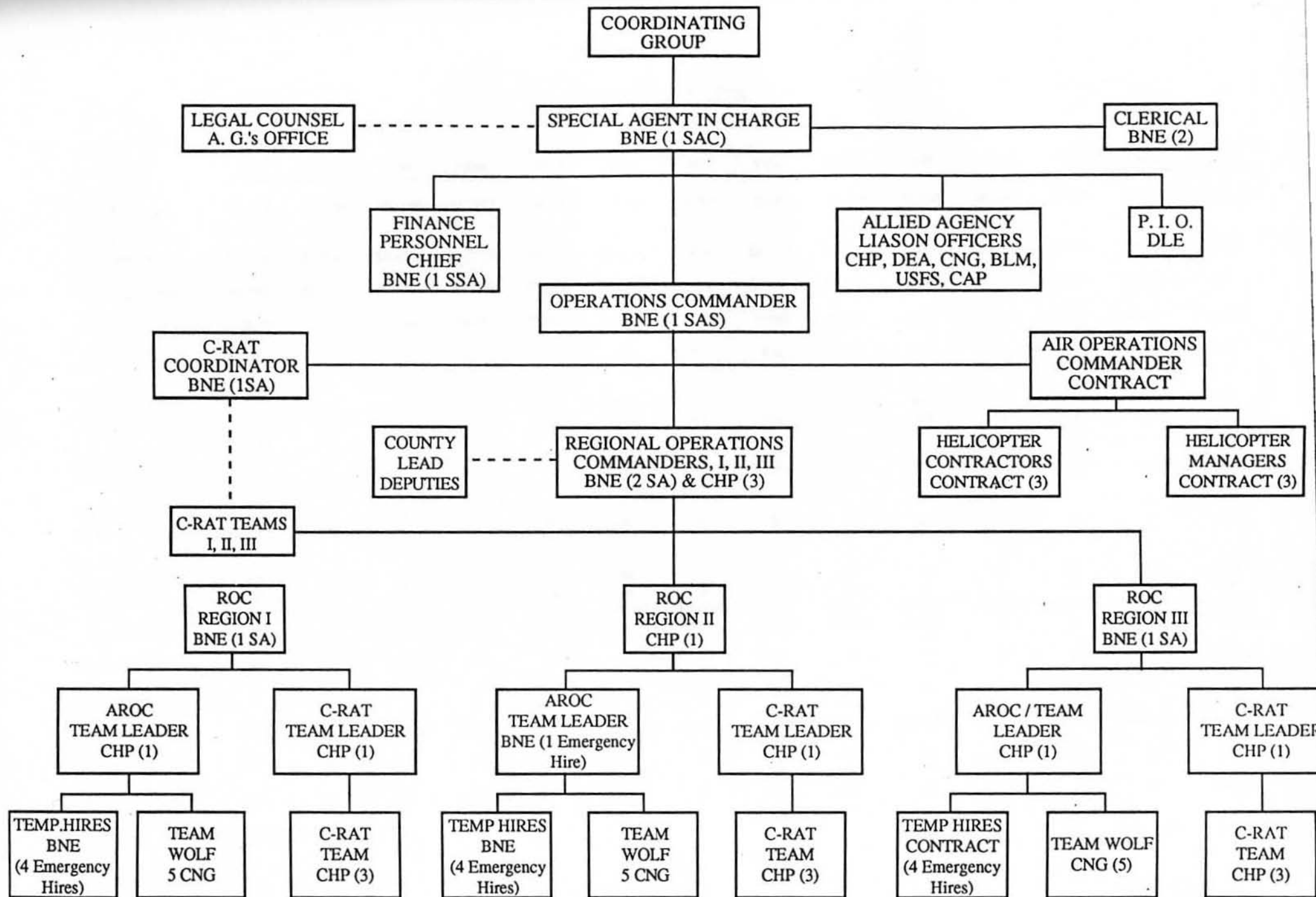
Martin Myers, Special Agent, United States Forest Service

Paul Seehafer, Special Agent, Drug Enforcement Administration

Candice Yoakam, Finance/Personnel Chief, Bureau of Narcotic Enforcement, CAMP

Walter E. Kaiser, Special Agent Supervisor, Bureau of Narcotic Enforcement, CAMP

CAMP 1995 ORGANIZATIONAL CHART



ADMINISTRATIVE CONTROL: - - - - -

OPERATIONAL CONTROL: _____

CAMP STATISTICS

	1983	1984	1985	1986	1987	1988	1989	1990	1991	1992	1993	1994	1995	TOTAL
# PLANTS	64,579	152,368	166,199	117,277	144,661	107,297	147,518	79,441	85,159	92,388	66,386	82,694	74,789	1,380,736
VALUE (WHOLESALE)	\$130 m.	\$320 m.	\$334 m.	\$403 m.	\$449 m.	\$312 m.	\$442 m.	\$263 m.	\$290 m.	\$333 m.	\$245 m.	\$612 m.	\$588m.	\$4,701b.
COST PER POUND	\$2,000	\$2,000	\$2,000	\$3,400	\$3,100	\$2,988	\$3,000	\$3,300	\$3,400	\$3,600	\$3,700	\$3,700	\$3,800	N/A
ARRESTS/SUSPECTS	128/30	123/95	147/60	91/113	83/117	97/75	78/54	114/53	128/63	86/42	51/34	47/18	60/18	1,183/810
NO. OF RAIDS	524	398	684	637	740	627	501	422	398	398	298	300	225	6,152
RAID SITES:														
- PRIVATE LAND	73%	70%	72%	69%	77%	74%	68%	77%	87%	81%	87%	89%	90%	83%
- PUBLIC LAND	27%	30%	28%	31%	23%	26%	32%	23%	13%	19%	13%	11%	10%	17%
AVERAGE NO. OF PLANTS PER SITE	123	398	241	184	195	171	294	87	100	232	115	333	170	203
BOOBYTRAPPED SITES	0	17	30	12	10	5	8	5	20	21	1	0	0	129
SEIZURES														
- FIREARMS	80	524	370	284	128	88	72	109	101	133	28	24	16	1,955
- VEHICLES	20	47	62	27	28	14	10	15	12	9	1	0	0	235
- CASH	0	\$36,000	\$79,841	\$6,011	\$10,000	\$28,705	\$49,154	\$31,491	\$7,930	\$212,113	\$3,684	\$3,202	\$13,000	\$481,131
- ASSETS (LAND)	0	0	3.3 m.	3.9 m.	3.3 m.	\$2.0 m.	\$6.7 m.	\$6.8 m.	\$5.0 m.	\$79 m.	0	0	0	\$31.79 m.
NO. OF TEAMS	4	7	7	7	7	7	6	6	6	5	4	3	3	N/A
NO. OF HELICOPTERS	4	7	7	7	7	7	6	6	6	5	4	3	3	N/A
* BUDGET	\$1.8 m.	\$2.3 m.	\$2.8 m.	\$2.4 m.	\$2.8 m.	\$2.9 m.	\$2.6 m.	\$2.5 m.	\$1.3 m.	\$758,000	\$555,000	\$467,000	\$462,000	N/A
NO. OF AGENCIES	67	91	102	100+	100+	79	78	80	96	19	0	35	33	N/A
NO. OF COUNTIES	14	37	38	37	39	41	41	46	52	53	43	42	44	N/A

* Since 1991 - cash only, exclusive of in-kind services

CAMP 1995 CUMMULATIVE RAID REPORT
AUGUST 7, 1995 THROUGH SEPTEMBER 29, 1995

COUNTY	TEAM DAYS	# OF RAIDS	# OF GARDENS	# OF PLANTS	ARRESTS	SUSPECTS	HELO HOURS
Humboldt	32	51	128	26,835	11	9	162.7
Lake	4	3	4	825	5	0	0
Mendocino	32	66	177	26,576	11	7	149.5
Monterey	4	8	8	4,182	0	0	19.9
Napa	3	4	15	2,499	0	0	11.7
San Luis Obispo	7	7	3	1,413	3	0	9.1
San Mateo	3	3	8	811	0	0	11.4
Santa Cruz	8	41	47	4,768	18	2	35.4
Sonoma	12	42	49	6,860	12	0	48.5
GRAND TOTAL	105	225	439	74,769	60	18	448.2

CAMP 1995 PROGRAM TIME-LINE

TASK/ACTIVITY	JAN	FEB	MAR	APR	MAY	JUN	JUL	AUG	SEPT	OCT	NOV	DEC
Operational Planning and Development	1 ————— 31											
Complete Operations Plan Proposal					12							
Obtain Interagency Resource Commit.	1 ————— 31											
Develop/Finalize MOUs			1 ————— 5									
Recruit Team Members		3 ————— 5										
Backgrounds					19							
Command Staff Assigned	1 ————— 31											
Operations Commander	1 ————— 31											
Litigation Coordinator						1 ————— 29						
Air Ops. Commander						19 ————— 29						
Finance/Personnel Chief	1 ————— 31											
Training Coordinator						1 — 28						
Regional Operations Commander (ROCs)							9 ————— 29					
Asst. Regional Ops. Commander (AROCs)							9 ————— 29					

CAMP 1995 PROGRAM TIME-LINE (continued)

[illegible]

CAMP 1995 SURVEY

COUNTY	CAMP TEAM SERVICES	RECOMM.	INCREASE/ DECREASE PROBLEM	INCREASE IN-DOOR GROWS?	PRICE PER POUND	NUMBER OF ARRESTS	AIR OPERATIONS SERVICE	CA NATIONAL GUARD SERVICE
BUTTE	Not used	None	Decrease	Decrease	\$2,800 - \$3,500	28	Recon: Late June Raid: Aug & Sept	10 hrs. recon.
CALAVERAS	Not used	None	Increase	Stayed same	\$4,000	12	Recon: July Raid: ?	15 hrs. recon.
HUMBOLDT	Adequate size Excellent svcs.	Teams got better as season progressed	This year a decrease	Stayed same	\$5,500	40	Recon: Early in yr Raid: August	100 hrs. recon. (at least)
LAKE	Not used	None	Increase	Same	\$5,000	10	Recon: May Raid: Late Sept.	80 hrs recon.
MARIN	Not used	None	Decrease	No increase	\$2,500	0	Recon: May Raid: August	None
MENDOCINO	Too large - but excellent personnel	Reduce number of Temp Hires	Slight decrease	No increase	\$4,500	35	Recon: March Raid: May	At least 100 hr. recon

CAMP 1995 SURVEY

COUNTY	CAMP TEAM SERVICES	RECOMM.	INCREASE/ DECREASE IN PROBLEM	INCREASE IN-DOOR GROWS?	PRICE PER POUND	NUMBER OF ARRESTS	AIR OPERATIONS SERVICE	CA. NATIONAL GUARD (CNG) SERVICE
MODOC	Not used	None	About the same as 1994	Same	\$3,500	2	Recon: August Raid: September	Not used
MONTEREY	Size adequate. Team service excellent	Earlier pre-season planning meeting	Increase in usage. Same for cultivation	Slight increase	\$5,000 - \$6,000	10	Recon: July Raid: August	110 hrs. recon.
SANTA BARBARA	Not used	None	Increased (doubled over 1994)	Same	\$5,000	6		120 hrs. recon.
SAN MATEO	Size adequate. Excellent svcs.	None	Same	Same	\$1,800 - \$2,200	0	Recon: July Raid: Aug - Sept.	10 hrs. recon.
SANTA CRUZ	Size adequate. Excellent svcs.	Request Team Wolf returns	Big increase. Gardens larger	Same	\$5,000 - \$6,500	190	Recon: May Raid: August	195 hrs. recon.
SONOMA	Size adequate. Excellent svcs.	Return Hummer with Team Wolf	Slight decrease	Same	\$4,000	65	Recon: 1 July Raid: 15 July	Not user per County Counsel