

**SAILING DIRECTIONS**

This harbor may be easily recognized by a remarkable red bluff facing the entrance, with a perpendicular front to the sea of 96 ft. and by the headland known as Table Bluff, five miles to the southward.  
 Since this survey was made the Entrance to the Main Channel has changed its position to the Northward, and vessels entering must therefore use great caution, keeping to the Northward of the Channel laid down on this map.

**TIDES**

High Water on full and change days 12<sup>h</sup> 25<sup>m</sup>  
 Mean rise and fall of tide from 20 observations 7 feet  
 Greatest do do 7  
 Least do do 1.7  
 The ordinary strength of current does not exceed 2 knots per hour between the sand spits.

**NOTE**

The courses and Bearings are Magnetic and the distances are in Nautical Miles. The Soundings are expressed in feet or within the dotted lines beyond them in fathoms and show the depth at mean low water the plans of reference. The dotted lines beyond low water mark represent the bottom within the respective depths of 6, 12 & 18 ft. thus for 6 ft. for 12 ft. for 18 ft. The characteristic Soundings only are given on the map. They are selected from the numerous Soundings taken in the surveys as to represent the figure of the bottom.

Latitude of Humboldt Town 40° 44' 45"  
 Longitude do do W from Greenwich Observatory 124° 10' 15"  
 Longitude do do W from Greenwich Observatory 124° 10' 15"  
 Longitude do do W from Greenwich Observatory 124° 10' 15"  
 Variation of the Magnetic Needle at Humboldt Town 18° 19' East

Sketch J No. 8  
 U.S. COAST SURVEY  
 A.D. BACHE SUPERINTENDENT  
 PRELIMINARY SURVEY OF  
**HUMBOLDT BAY**  
 CALIFORNIA

By the Hydrographic Party under command of  
 Lieut. James Alden U.S.N. and Assist. U.S.C.S.

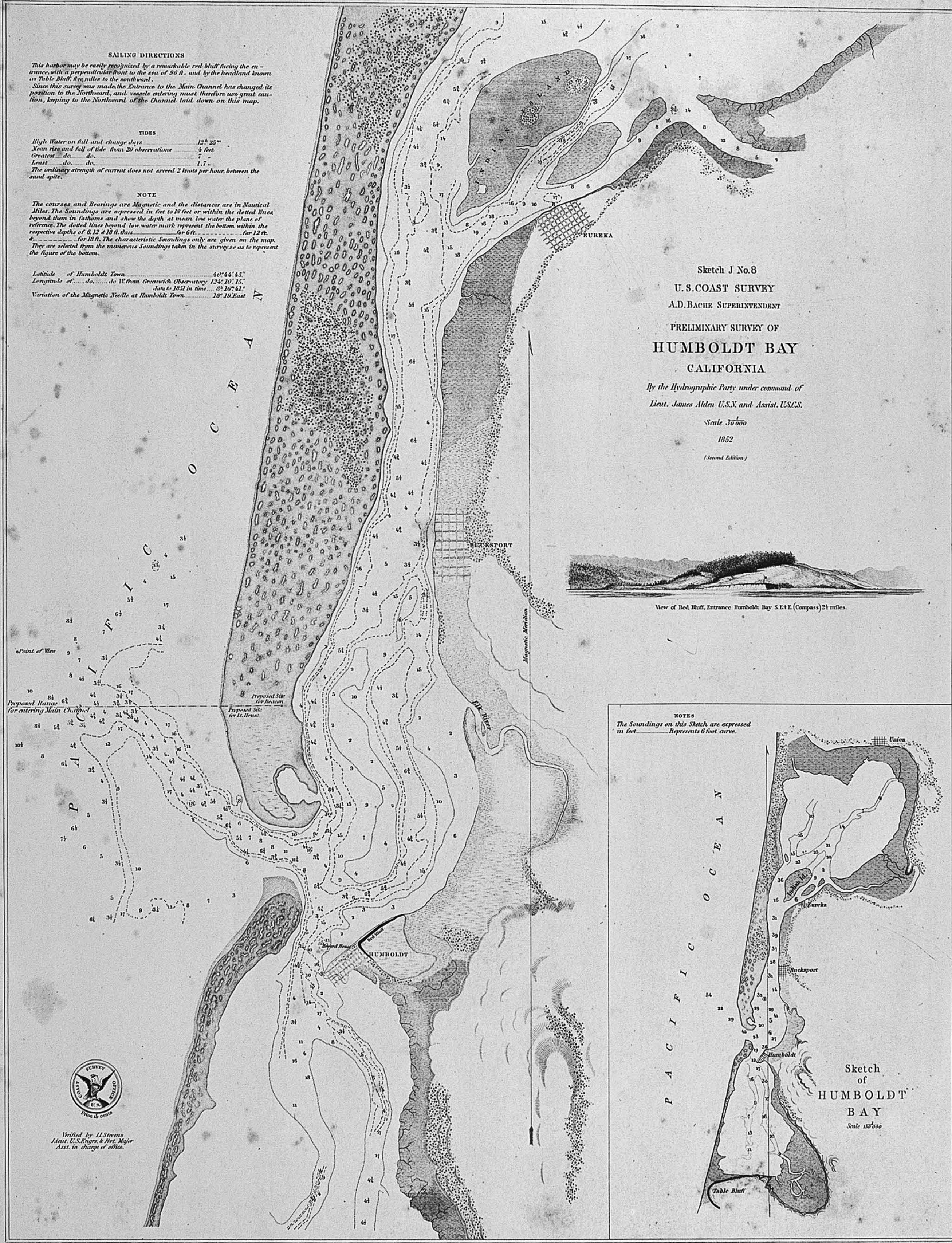
Scale 30'000

1852

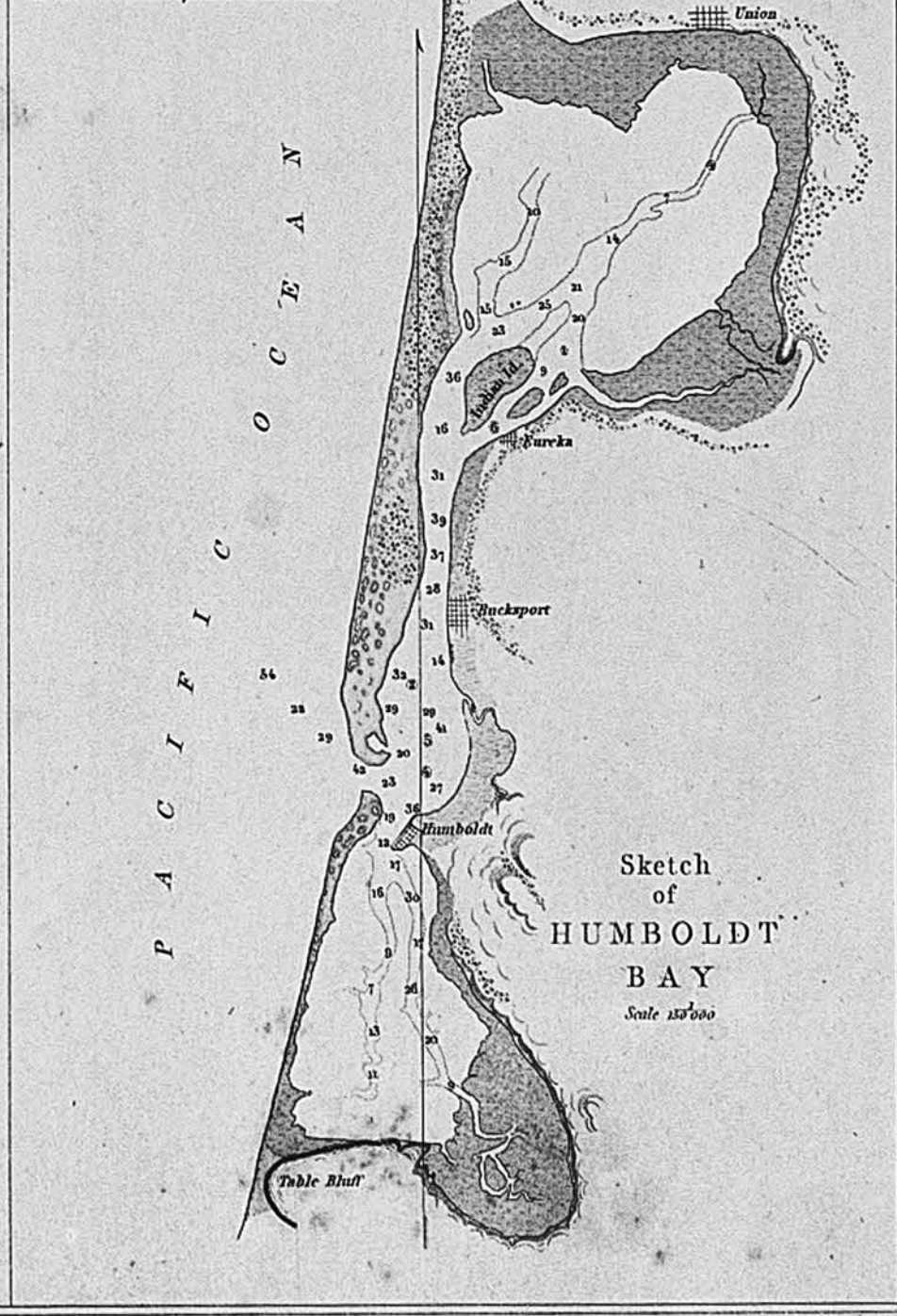
(Second Edition)



View of Red Bluff, Entrance Humboldt Bay S.E. & E. (Compass) 2 1/2 miles.



**NOTES**  
 The Soundings on this Sketch are expressed in feet. Represents 6 foot curve.



Sketch of  
**HUMBOLDT BAY**  
 Scale 150'000



Verified by L.S. Stevens  
 Lieut. U.S. Navy, & Asst. Major  
 Asst. in charge of office.