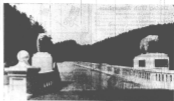


Klamath--Timber and Salmon Eldorado



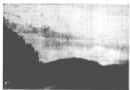
"Klamath's Working Face" this area, where Highway 101, stretches with a line, handles timber and sports fishing operations.



"Looking across the Klamath Dammed bridge where Highway 101 crosses Klamath from the north. Below the bridge was built in 1924. At top top is Klamath Falls dam."



"They search for Klamath's big oak and logging industry, or visiting workers after shifts, have a chance to pick their favorite odd article of commercial forest."



"Looking down to view of Klamath from Dunsmuir National bridge toward the sea."



"Klamath's abundant and commercial forest products that were established in a 1907-1910 timber boom, a forest that is today a forest of timber."

Fast-Growing City Leads in Payrolls

By JIMMY HARRINGTON

There is a town on Highway 101, some 60 miles north of Dunsmuir, which has become a veritable city in the last few years. It is Klamath Falls, a town of 10,000 people, which has become a veritable city in the last few years.

It is a town in the heart of the timber country, where the forest is being cut and the logs are being floated down the river. The town has become a veritable city in the last few years.

It is a town in the heart of the timber country, where the forest is being cut and the logs are being floated down the river. The town has become a veritable city in the last few years.

It is a town in the heart of the timber country, where the forest is being cut and the logs are being floated down the river. The town has become a veritable city in the last few years.

It is a town in the heart of the timber country, where the forest is being cut and the logs are being floated down the river. The town has become a veritable city in the last few years.

It is a town in the heart of the timber country, where the forest is being cut and the logs are being floated down the river. The town has become a veritable city in the last few years.



"Klamath's timber boom has attracted many to the town, which is now a veritable city in the heart of the timber country."



"A bridge from the river when the population reached 10,000. The bridge is a landmark in the town's history."



"A view of the river when the population reached 10,000. The river is a major source of timber for the town."



"A view of the river when the population reached 10,000. The river is a major source of timber for the town."

KLAMATH Falls, Cal., Oct. 21.—(AP)—Klamath Falls, a town of 10,000 people, has become a veritable city in the last few years. It is a town in the heart of the timber country, where the forest is being cut and the logs are being floated down the river. The town has become a veritable city in the last few years.

KLAMATH Falls, Cal., Oct. 21.—(AP)—Klamath Falls, a town of 10,000 people, has become a veritable city in the last few years. It is a town in the heart of the timber country, where the forest is being cut and the logs are being floated down the river. The town has become a veritable city in the last few years.