

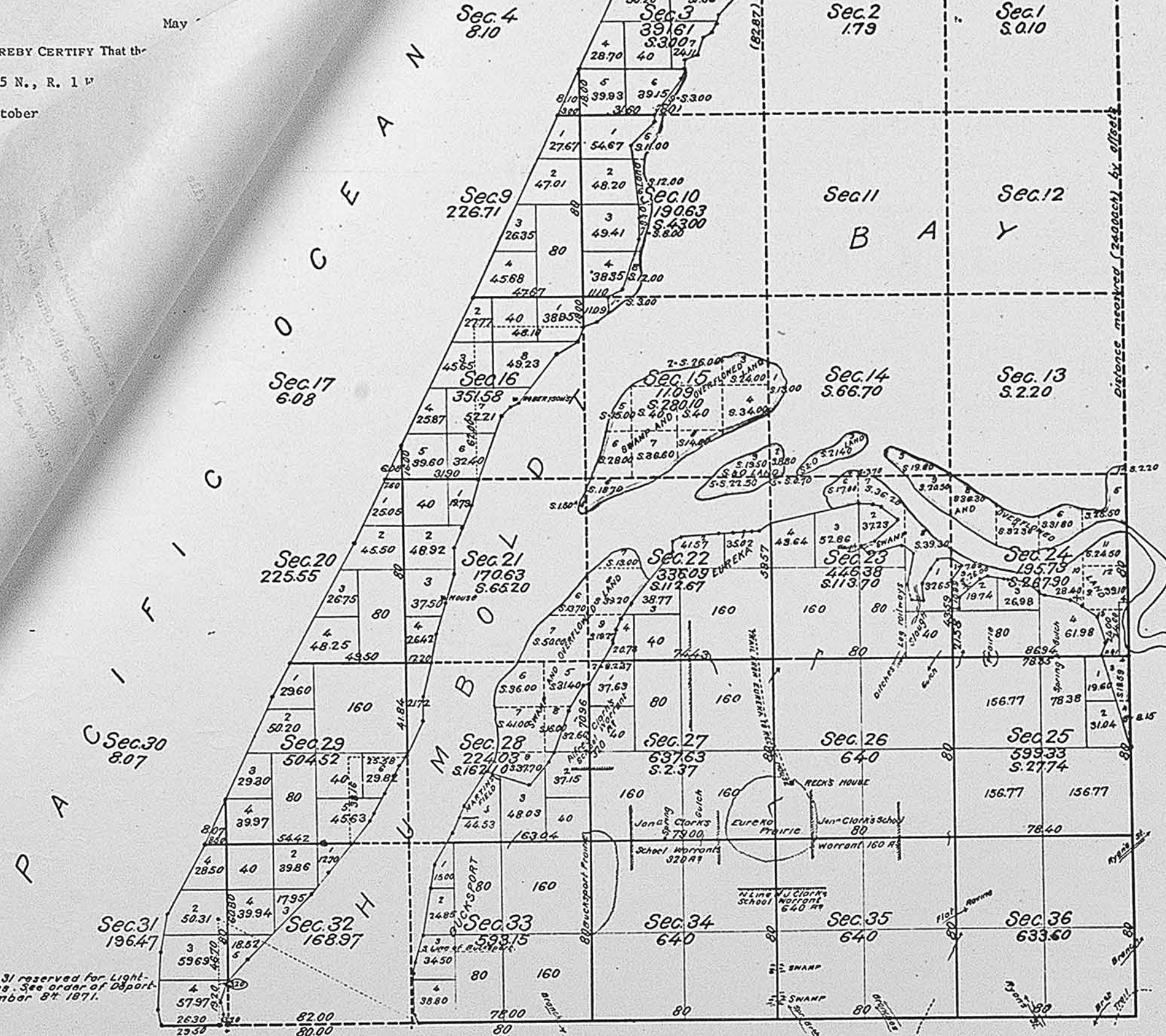
Township No. 5 North, Range No. 1 West, Humboldt Meridian.

Form 1810-7 (October 1964) (formerly 4-207)

UNITED STATES DEPARTMENT OF THE INTERIOR BUREAU OF LAND MANAGEMENT STATE OFFICE Federal Office Bldg., Room E-2841 2800 Cottage Way Sacramento, California

May

I HEREBY CERTIFY That the Plat of T. 5 N., R. 1 W approved October



Aggregate Area of Public Land	8,847.74 Acres
Swamp & Overflowed Land	1,146.68
Humboldt Bay & Navigable Sloughs	6,455.58
Aggregate	15,650.00

* See from S. 6. Mar. 22, 1902. N. 51291 m. N. for lots 9 and 10 of Sec. 24

Note The segregation of Swamp & Overflowed lands, made by the State of California, in this Township prior to July 23rd 1866, is shown by boundaries shaded dark green.

DEPARTMENT OF THE INTERIOR, GENERAL LAND OFFICE, Washington, D. C. Nov. 21, 1902: I hereby certify that this is a true copy of the plat of official survey of the lands to which it relates, on file in this office.

K. W. Langford, Recorder, General Land Office.

I hereby certify the above to be a full, true, and correct copy of the original plat of Fractional Township No. 5 North, Range No. 1 West, Humboldt Meridian, California, approved October 22, 1890, and on file in this Office. U.S. Surveyor-General's Office, San Francisco, California February 13, 1902

W. S. Graham, U.S. Surveyor General for California.

The above Map of Fractional Township No. 5 North of Range No. 1 West of Humboldt Meridian represents the Amendments, made to the Map of this Township approved March 15th 1855, in strict conformity with the instructions of the General Land Office dated December 19th 1871. And the segregation of Swamp & Overflowed lands, made by the State of California prior to July 23rd 1866, which segregation conforms to the system of surveys adopted by the United States. U.S. Surveyor General's Office, San Francisco California October 22, 1890

W. H. Pratt, U.S. Surv. Gen. Cal.

Lots 3 & 4 Sec. 31 reserved for Light-house purposes. See order of Department, September 8th 1871.

J.U.